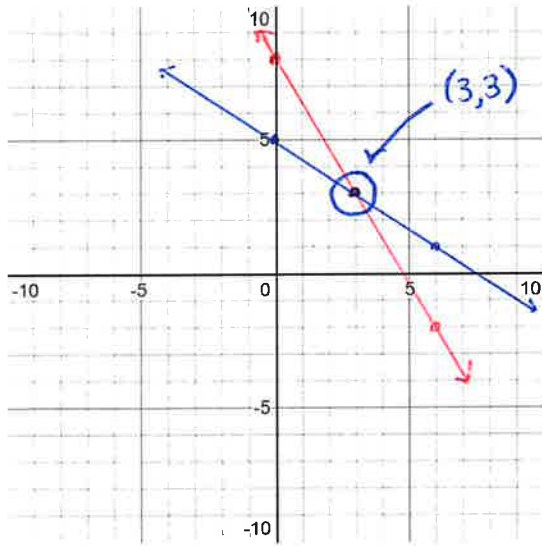


Name: **KEY**

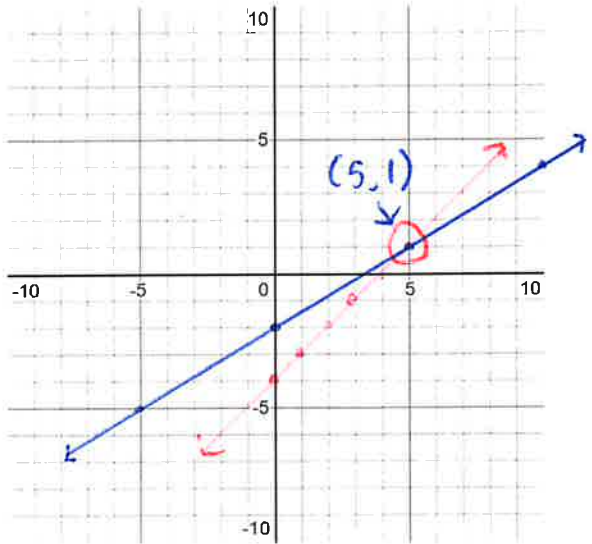
Section 4.1a - Solving Systems by Graphing

Solve the systems of equation given below by graphing and determining the point of intersection.

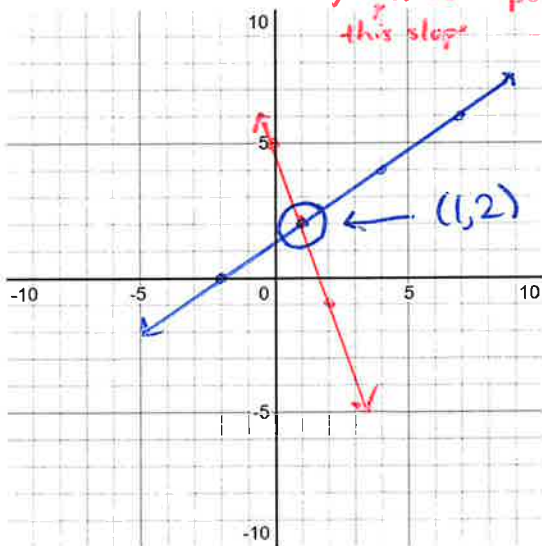
Blue  $y = -\frac{2}{3}x + 5$  and  $y = -\frac{5}{3}x + 8$  Red



Blue  $y = \frac{3}{5}x - 2$  and  $y = x - 4$  Red

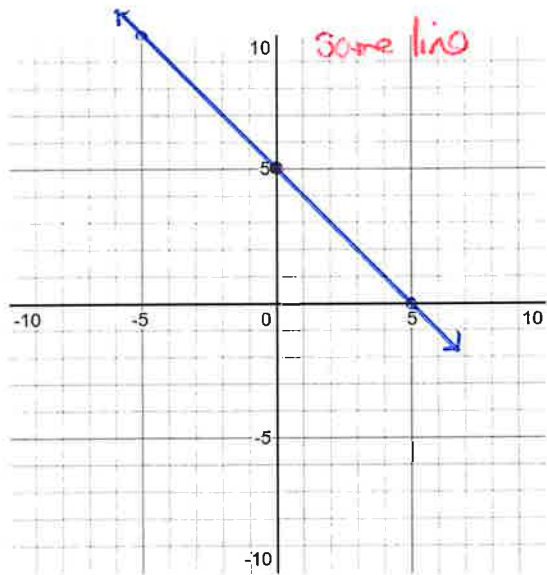


$(-2, 0)$  this point  
 $2x - 3y = -4$  and  $3x + y = 5$   
 use this point  
 $y = -3x + 5$  this slope



$-3y = -2x - 4$   
 $y = \frac{2}{3}x + \frac{4}{3}$  use this slope

Blue  $x + y = 5$  and  $2x + 2y = 10$  Red  
 same line



infinite solutions